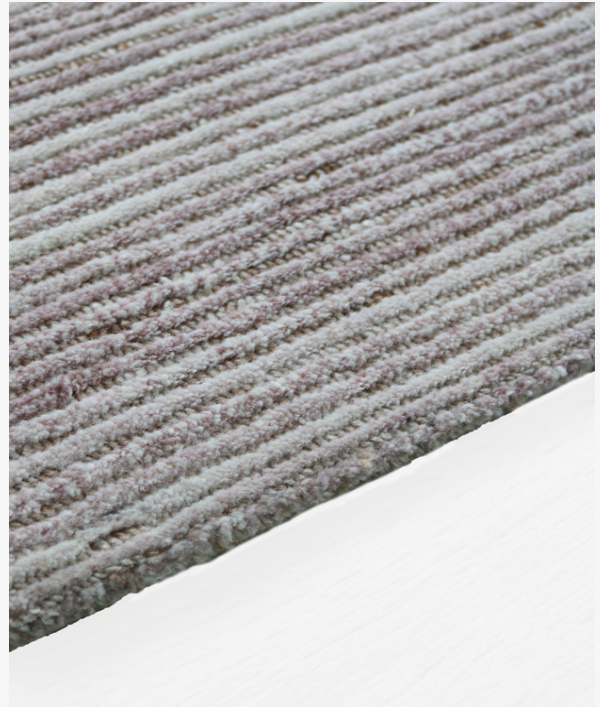


## PERFORMANCE



Atrium White



Design: Shimmer Chenille  
Indoor/Outdoor

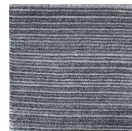
### HAND-KNOTTED

Materials: Performance P.E.T yarn  
Technique: Cut-pile & loop 100knot  
Edge: Serged  
Custom: Yes. Made-to-order

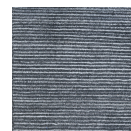
### COLORWAYS



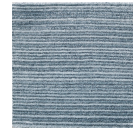
Midsummer  
night



BlackJack



Smoke gray



Marine blue



Street beige